

Two Bedroom Townhouses

New Townhouses Available Fall 2024

Discover your eco-friendly haven in the heart of southern Maine. These charming two-bedroom, two-bathroom townhouses not only offer comfort and convenience but also each home features a solar array to help offset your energy costs. Experience classic modern living adjacent to the Neighborhood Park.



6 x Two BR/ BA Townhouses

2 Solar Way
First & Second Floor Layout
2BR/2BA



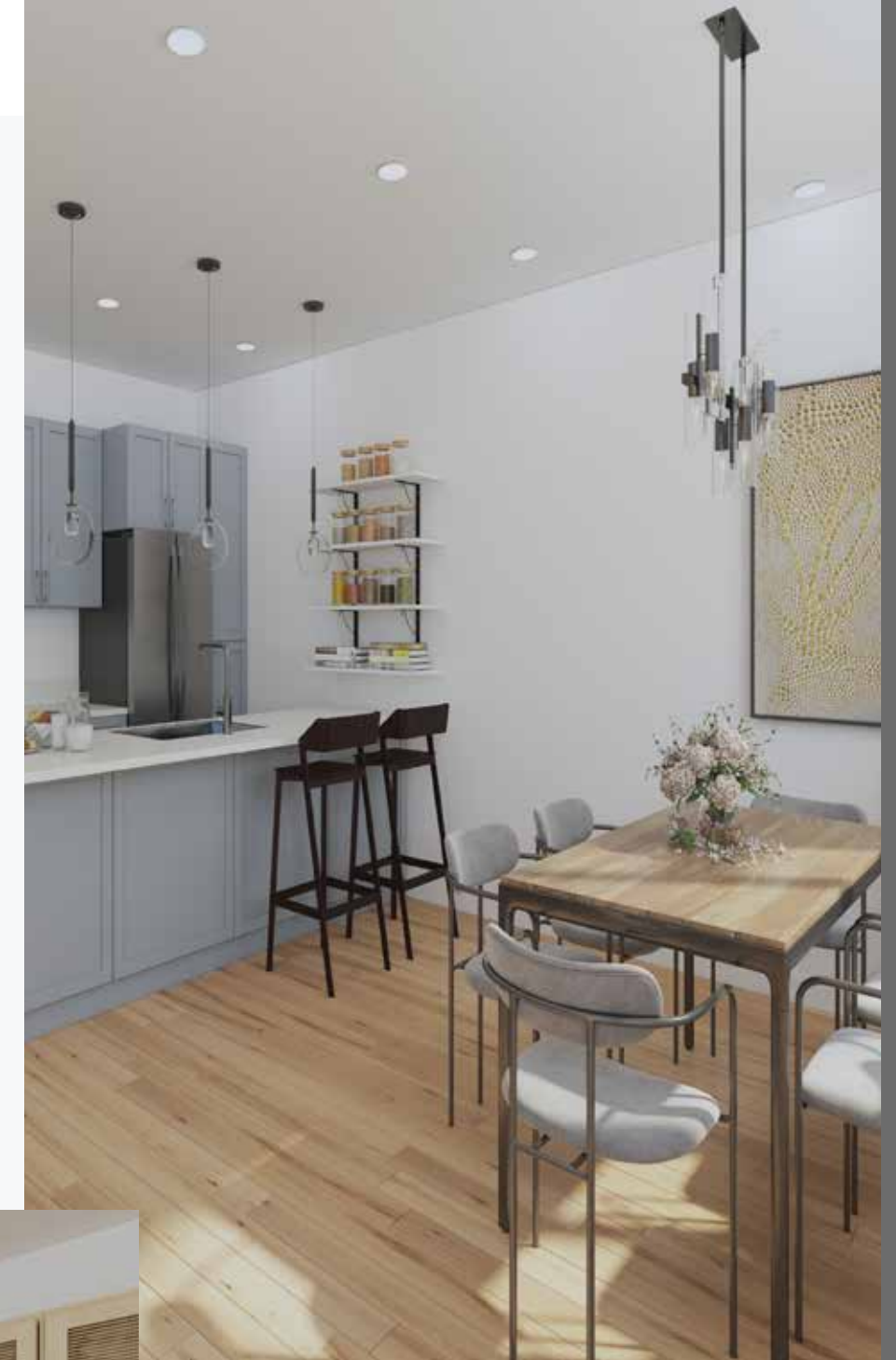
Community Park and Neighborhood

TWO BEDROOM/ BATHROOM LAYOUT

With a spacious living area and modern features you'll find the ideal townhouse to call home while reducing your carbon footprint. Enjoy the tranquil atmosphere and proximity to local amenities, making it a great investment opportunity.

Classic Modern Living without the Maintenance. Two bedroom units feature 1341 sq ft of living space.

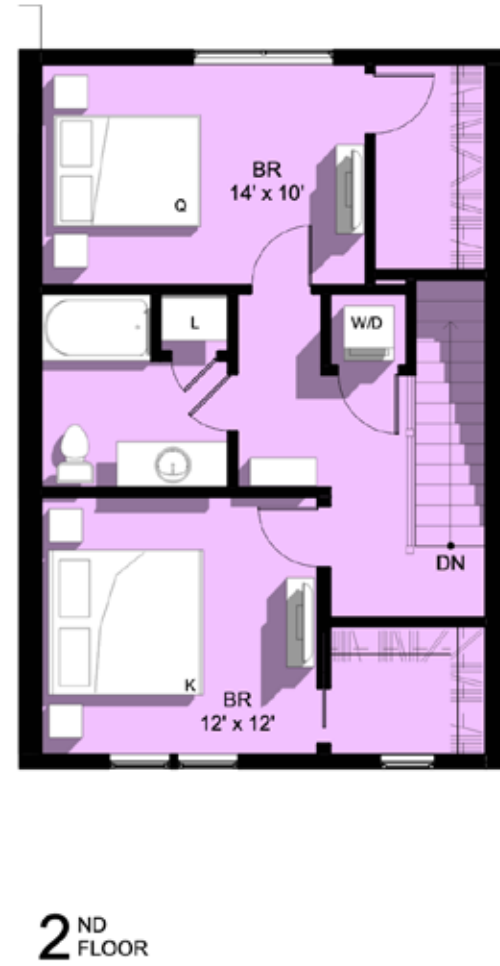
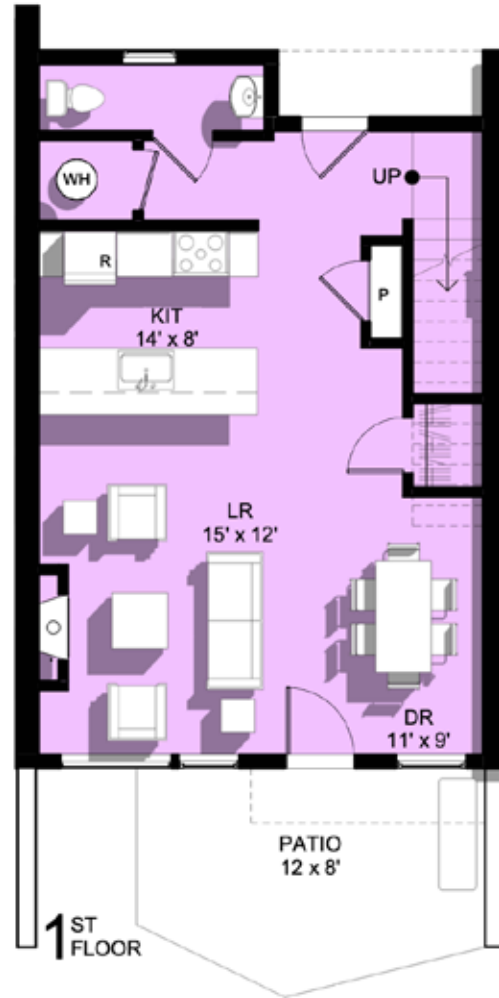
Luxury Living



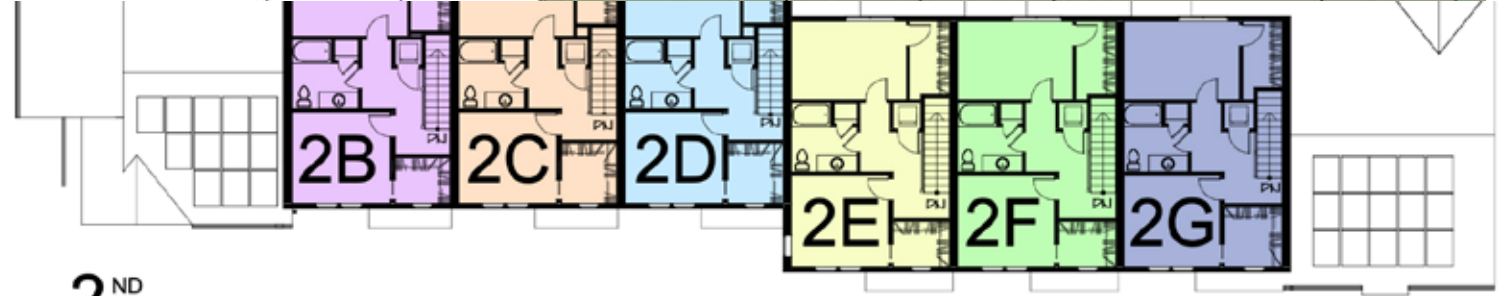
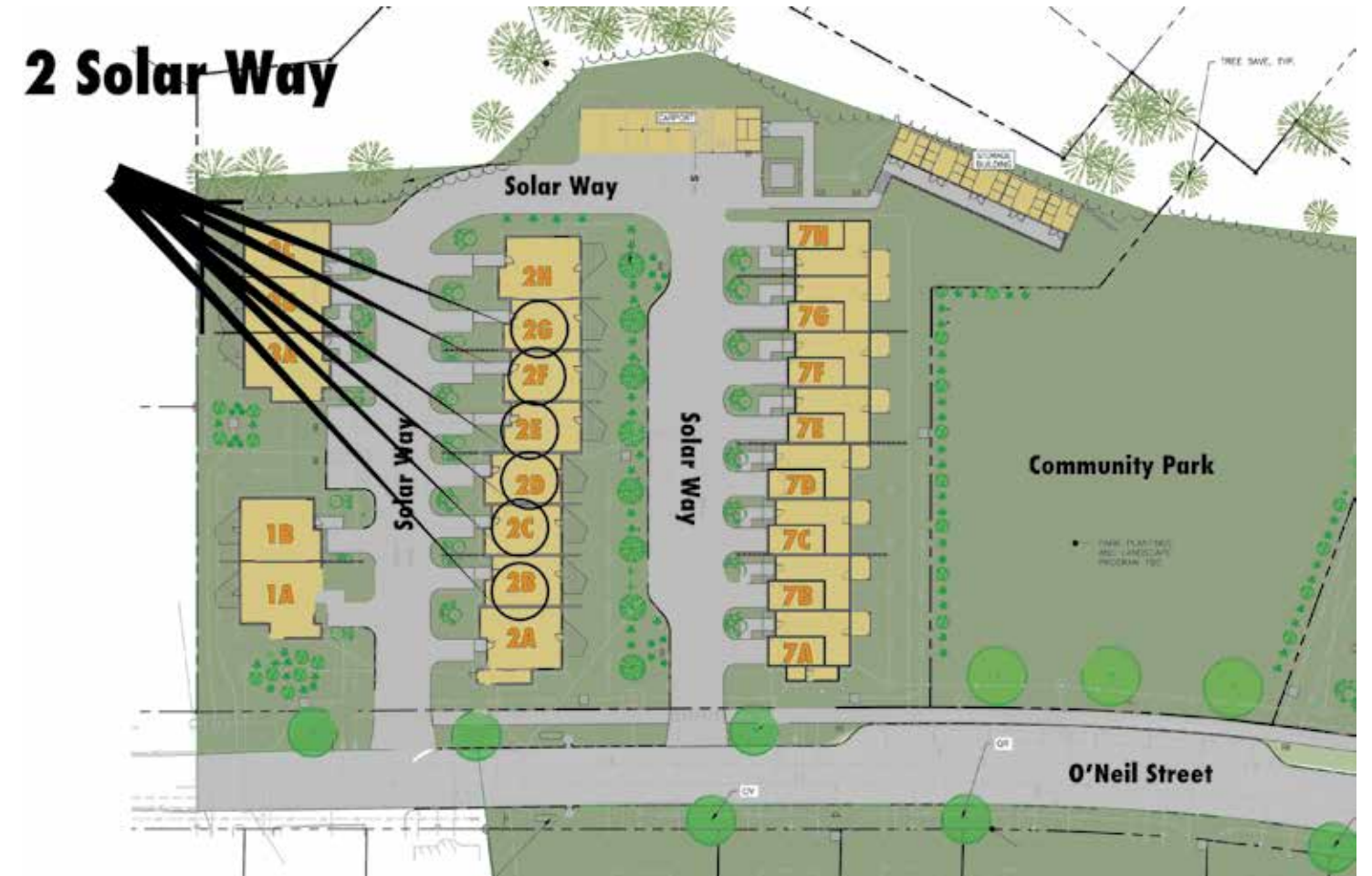
- + 9 ft Ceilings
- + Solar Array
- + Hardwood Floors
- + Gas Fireplace

Units 2B - 2G

Spacious Two Floor Layout



1341 sq ft
of Living Space





WWW.FINDYOURMAINEHOME.COM
207.232.6127

Two Bedroom Townhouses